



FRONT ANTI-ROLL BAR - 25MM – NF.1525

Fits 2012-up Fiat 500 All Models

PARTS LIST:

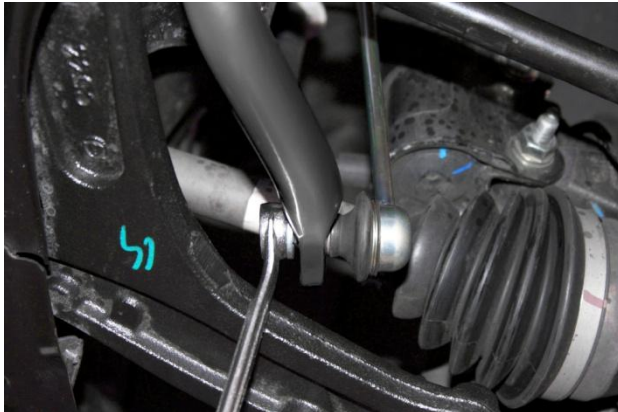
- 1 – 25mm Anti-Roll Bar
- 2 – 25mm Urethane bushing
- 1 – Synthetic Grease
- 2 – Bushing Clamp w Base Plate
- 4 – M8 x 25mm Flange Bolt

TOOLS REQUIRED:

- 1 – 10mm Socket
- 1 – 18mm Socket
- 1 – 21mm Socket
- 1 – 15mm Socket
- 1 – E12 Socket (External Torx)
- 1 – 16mm Wrench
- 1 – E18 Socket (External Torx)

1. Park car on a flat, level surface capable of supporting the vehicle's weight on jack and jack stands. **Note:** Car hoist recommended. Using the manufacturer's recommended lifting point(s), raise front of vehicle and support with jack stands. **NEVER WORK ON A VEHICLE SUPPORTED ONLY WITH A JACK!**

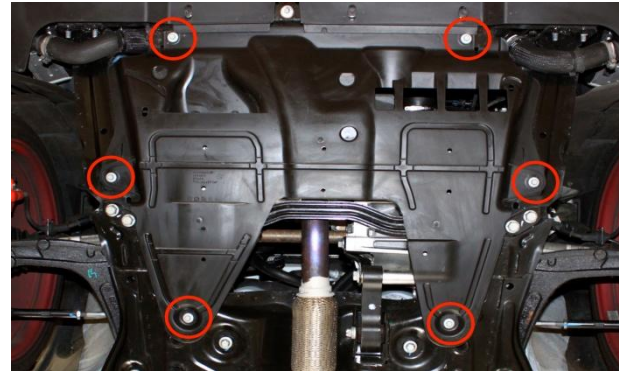
2. Remove front wheels.



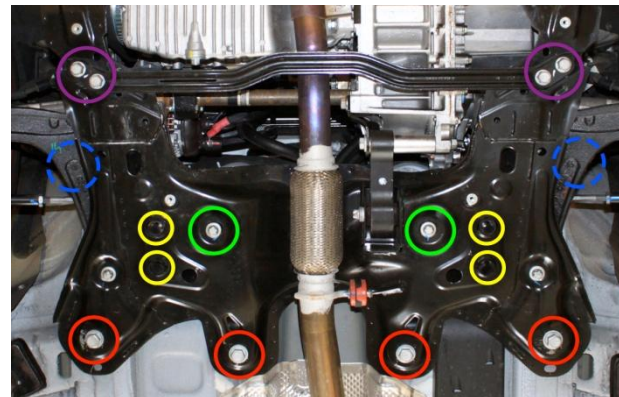
3. Using 16mm wrench, disconnect end-link from anti-roll bar.



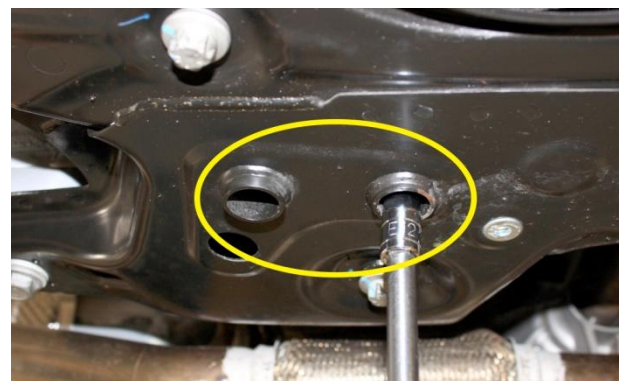
4. Using 15mm socket remove the side frame to sub-frame brace on both sides of vehicle.



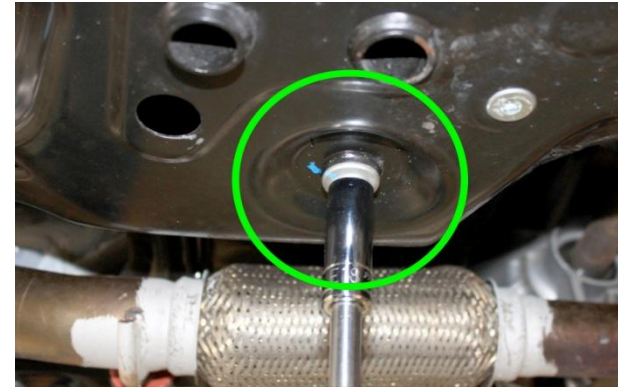
5. Remove the plastic lower engine cover, there are (6) 10mm hex bolts.



6. Sub-frame bolt identification and location.



7. Remove the (4) anti-roll bar bushing clamp bolts up thru holes in sub-frame using E12 socket.



8. Remove the (2) steering rack bolts using E18 socket.



9. Remove the (2) side sub-frame bolts using E18 socket.



10. Remove the (4) lower cross-bar bolts using 18mm hex socket.



11. Remove the (4) rear sub-frame bolts using 21mm hex socket.

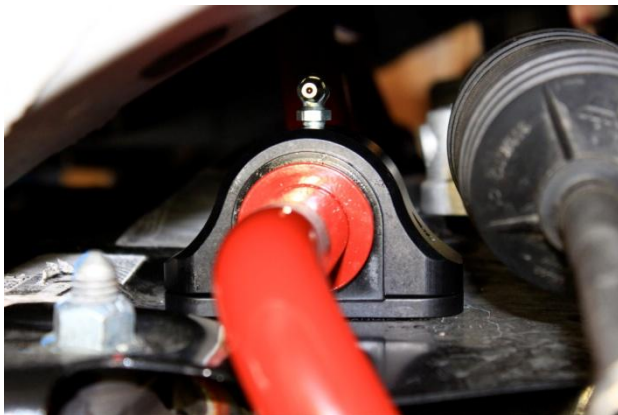
12. Remove original anti-roll bar out towards rear of vehicle. Rotate ends down and pull out passenger side first. **Note:** Extra person pulling down on sub-frame will ease removal.



13. Neu-F Anti Roll Bar: Install driver's side of bar over exhaust, then with ends pointing down snake passenger side up into position. Once again have extra person pulling down on sub-frame to ease installation. **NOTE:** Leave plastic wrap on during installation will help protect powder-coat finish during installation.



14. Grease urethane bushings with supplied grease and then install on inside of thrust washer on anti-roll bar.



15. Install bushing clamp with base plate and grease fitting pointing outwards toward side of vehicle. Using supplied M8x25mm bolts install and tighten, then torque to 38 Nm (28 ft. lbs).



16. Hole adjustment positions. See Adjustment Chart.



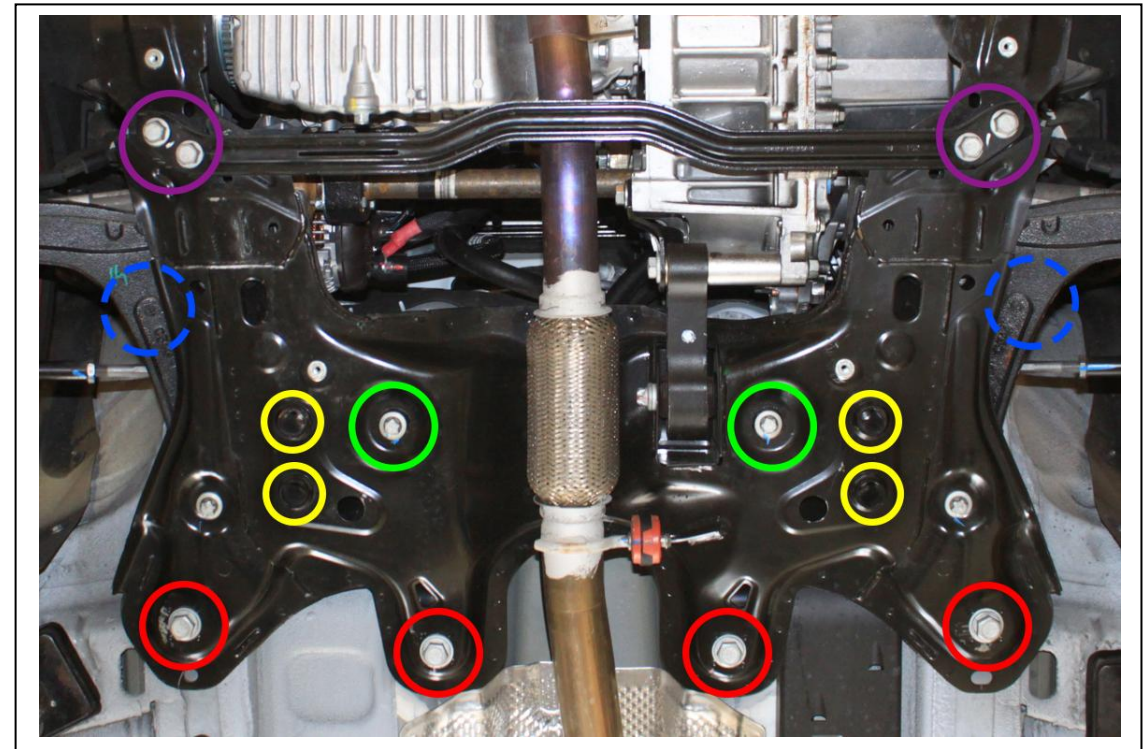
17. Re-install end-link nut using 16mm wrench and torque to 54Nm (40 ft. lbs).

18. Start all sub-frame bolt and steering rack bolts, and then tighten down evenly.

Torque specs:

- **Rear sub-frame bolts: (4) 21mm Hex 102Nm (75 ft. lbs.) Step #11**
- **Lower cross-bar bolts: (4) 18mm Hex 75Nm (55 ft. lbs.) Step #10**
- **Side sub-frame bolts: (2) E18 Torx 88Nm (65 ft. lbs.) Step #9**
- **Steering Rack bolts: (2) E18 Torx 88Nm (65 ft. lbs.) Step # 8**
- **Anti-Roll Bar Clamp bolts: (4) 12mm Hex 38Nm (28 ft. lbs.) Step #7**
- **Side Frame Brace: (4) 15mm Hex 47 Nm (35 ft. lbs.) Step #4**

19. Double check installation and torque of all bolts.
20. Re-install lower engine cover.
21. Re-install front wheels and torque to manufacture specifications.



Anti-Roll Bar Adjustment Chart

	LEFT-SIDE END-LINK POSITION		RIGHT-SIDE END-LINK POSITION	
	Front Hole	Rear Hole	Front Hole	Rear Hole
Setting 1 [Softest]	X		X	
Setting 2	X			X
Setting 3 [Stiffest]		X		X

Recommended adjustment procedure:

Start with softest setting and drive car on familiar road. Adjust bar to next stiffer setting and continue to adjust if necessary until proper balance suited to your motoring style is achieved.

Copyright 2013, NEUSPEED®. All rights reserved. Reproduction in whole or in part prohibited. DOC.NF.1525 Rev. 03.06.13