

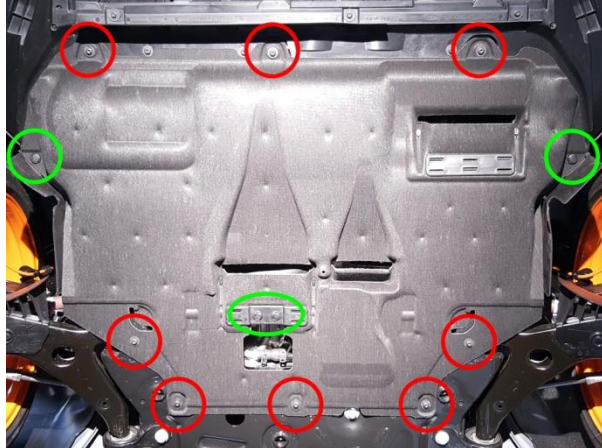
### PARTS LIST:

- 1 - 25mm Anti-Roll Bar
- 2 - Urethane Bushing
- 1 - Synthetic Grease

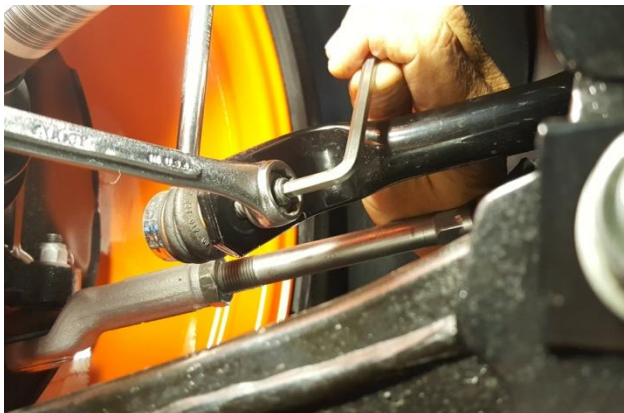
### TOOLS REQUIRED:

- 1 - T30 Torx
- 1 - 10mm Socket
- 1 - 13mm Socket
- 1 - 15mm Socket / Wrench
- 1 - 18mm Socket
- 1 - 21mm Socket / Wrench
- 1 - 5mm Hex Key Wrench
- 1 - Torque Wrench

- Note:** Installation should be done by a qualified mechanic. Vehicle Hoist and Screw Jack highly recommended. Park car on a flat, level surface capable of supporting the vehicle's weight on jack and jack stands. Using the manufacturer's recommended lifting point(s), raise front of vehicle and support with jack stands. **NEVER WORK ON A VEHICLE SUPPORTED ONLY WITH A JACK!**



- Remove the lower engine cover, there are (8) T30 screws and (4) plastic expansion clips.



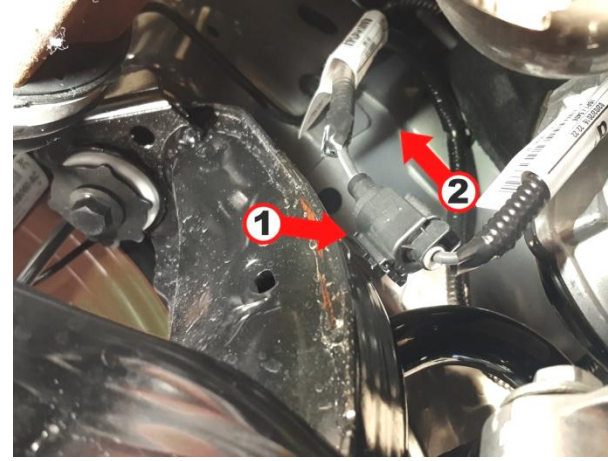
- Using 5mm Hex Key Wrench and 15mm wrench, disconnect end-links from anti roll bar.



- Remove engine torque arm bolt(15mm hex).



- Remove the (2) 13mm Hex Bolts that secure exhaust hanger to sub-frame.



- Unclip wire harness from sub-frame on passenger side. Push down locking tap then slide connector up off mount.



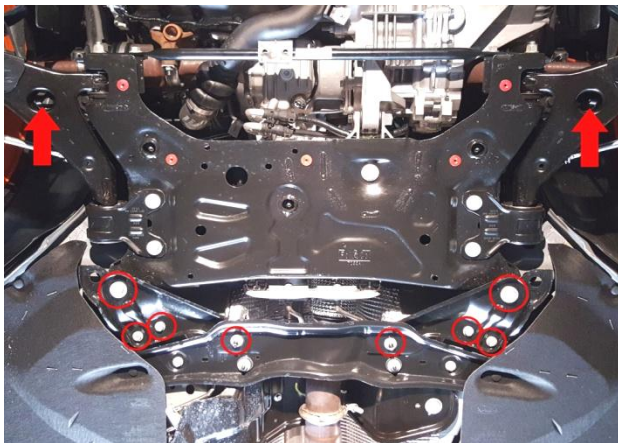
- Pull out wire harness support clip from sub-frame on driver side.



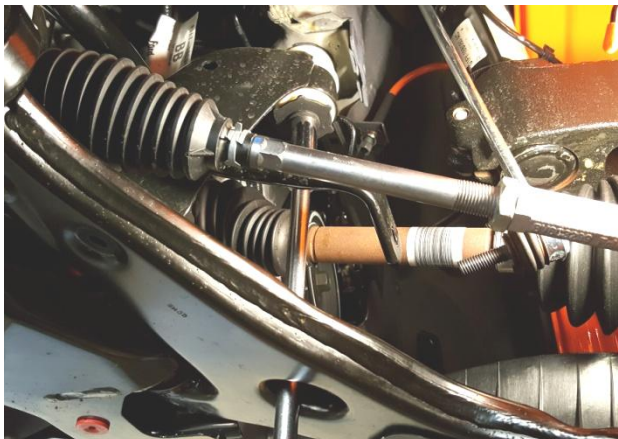
- Use marking pen around front sub-frame mounts to uni-body for location when reinstalling.



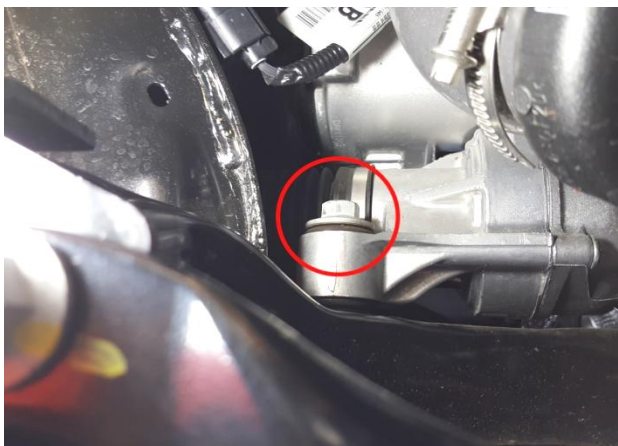
- Support sub-frame with Screw Jack.



10. Remove the rear sub-frame mounting bolts (21mm Hex) and support plate bolts(13mm Hex) and nuts(15mm Hex).



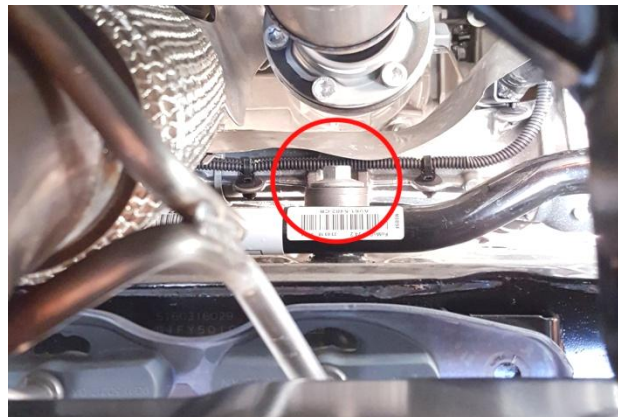
11. Remove the (2) front sub-frame bolts(15mm Hex). Arrows shown in step #10.



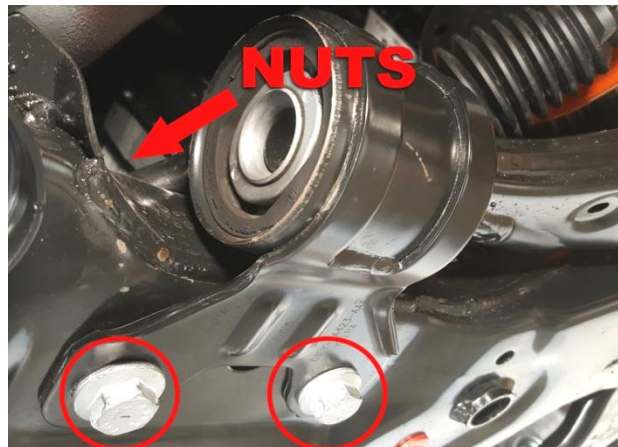
12. Carefully lower sub-frame only about 1", and then remove the (3) steering rack bolts(15mm Hex), passenger side.



13. Driver side steering rack bolt.



14. Center rear steering rack bolt. **NOTE:** For easier access remove rear cross brace. **HINT:** Use Bungee cords on steering tie rods up to strut spring to hold up steering rack.



15. Lower sub-frame about 4"-6" or as needed to remove factory anti roll bar. Remove the bolts(18mm hex) and nuts on top(21mm hex) that secure anti roll bar and rear control arm mount to sub-frame.

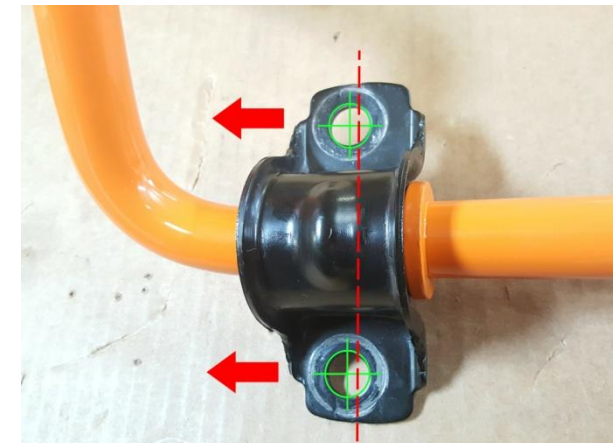
16. Now remove factory anti roll bar out towards rear of vehicle.

### NEUSPEED ANTI ROLL BAR INSTALLATION



17. Grease inside urethane bushings with supplied grease and then install on **outside** of thrust washers on NEUSPEED Anti Roll Bar.

18. Now install NEUSPEED Anti Roll Bar up into position on sub-frame.



19. Install factory bushing clamps with mounting holes outwards toward side of vehicle and secure to sub-frame using original hardware. Torque 135Nm (100 ft. lbs.)

20. Raise sub-frame up close to uni-body to re-install steering rack. Torque bolts to 135Nm (100 ft. lbs.)

21. Raise sub-frame up to uni-body, install bolts and align marks. Torque front bolts to 115Nm (85 ft. lbs.) and rear bolts to 135Nm (100 ft. lbs.) Re-install rear cross brace if removed.

22. Reconnect wire harness to sub-frame.

23. Reconnect engine torque arm. Torque bolt to 86Nm (63 ft. lbs.)



24. Connect factory end links to NEUSPEED Anti Roll Bar using original nuts. Torque to 63Nm (46 ft. lbs.)

25. Reconnect exhaust hanger. Torque to 25Nm (18 ft. lbs.)

26. Double check installation and torque of all bolts.

27. Re-install lower engine cover.

Copyright 2017, NEUSPEED®. All rights reserved.  
Reproduction in whole or in part prohibited.  
DOC.FF.1525 Rev. 02.02.17