

NEUSPEED®

P-FLO AIR INTAKE KIT – PART #65.10.81

2017-up Audi A3 2.0 TSI 184HP / 2018-up VW Tiguan 2.0 TSI 184HP

PARTS LIST:

1 - INTAKE TUBE
2 - M6 x 12MM SS SCREW
1 - SAE #44 HOSE CLAMP
1 - SAE #48 HOSE CLAMP
1 - HEAT SHIELD

1 - NEUSPEED FILTER
2 - M6 LOCK NUT
2 - M5 X 8MM SS SCREW
2 - M5 LOCK NUTS

1 - WEATHER STRIPPING
1 - SAI MINI FILTER
1 - SILICONE HOSE
3 - RUBBER MOUNTS

TOOLS REQUIRED:

1 - 3MM HEX KEY WRENCH
1 - 10MM WRENCH
1 - T25 TORX
1 - SPRING CLAMP PLIERS

1 - 8mm NUT DRIVER OR SCREWDRIVER
1 - 4MM HEX KEY WRENCH
1 - WD-40 or Equivalent
1 - 8MM WRENCH



1. Back-out grey locking tab from MAF (Mass Air Flow) sensor electrical connector, then squeeze tap to disconnect.



4. Disconnect vacuum line from air box lid.



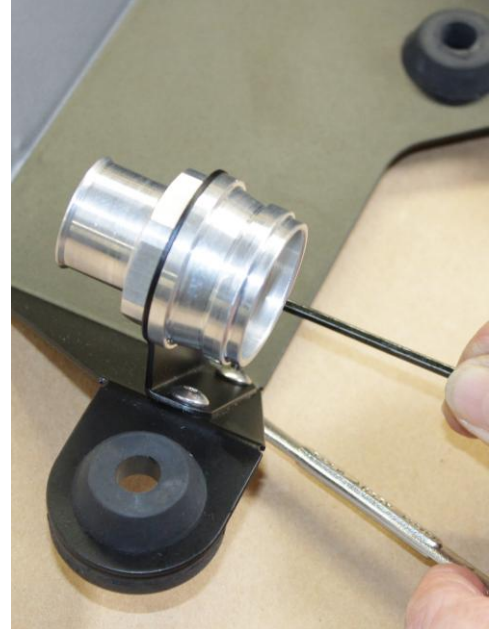
7. Re-install MAF back onto factory plastic turbo intake tube.



2. Disconnect turbo air intake hose from MAF using spring clamp pliers.



5. Pull up air filter box to disconnect (3) rubber grommets from mounts, then remove.



8. Mount billet air pump fitting with bracket to NEUSPEED Heat Shield using supplied M5x8mm and lock nuts. Tighten with 3mm hex key wrench and 8mm wrench.



3. Squeeze collar to unlock and disconnect SAI (Secondary Air Injection) hose from air filter box lid.



6. Remove T25 Torx screw from MAF mounting, then rotate MAF CCW to unhook other side then pull out from air filter box lid.



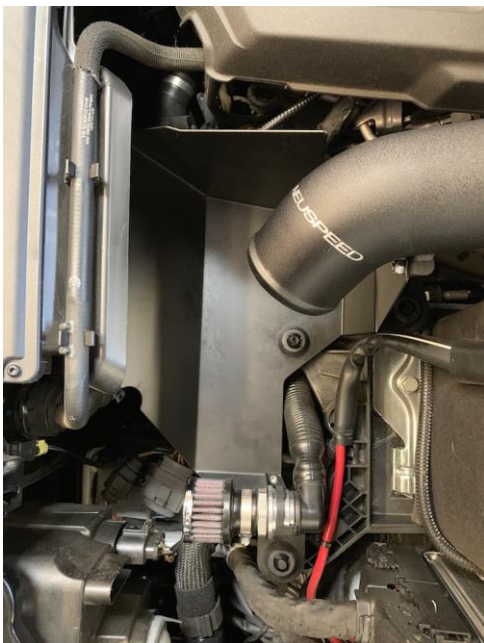
9. Install Mini Filter onto billet fitting.



10. Mount *NEUSPEED* Intake Pipe to Heat Shield using M6x12mm bolts and lock nuts. Tighten with 4mm hex key wrench and 10mm wrench.



11. Pivot SAI hose to sit between the two front air box mounts.



12. Install *NEUSPEED* Heat Shield onto original air box mounts. **NOTE:** Use WD-40 or equivalent on rubber grommets to ease install. Connect SAI hose to billet fitting.



13. Install silicone hose; smaller end with #44 hose clamp towards MAF and larger end with #48 clamp towards intake pipe, then tighten clamps. Now reconnect MAF sensor electrical connection.



14. Connect vacuum line to port on *NEUSPEED* Intake Pipe.



15. Install *NEUSPEED* Filter, adjust filter to have at least a 1/2" clearance above Heat Shield, and then tighten with 8mm nut driver.



16. Install rubber strip on top-edge of *NEUSPEED* P-Flo Heat Shield.

17. Double check complete installation.

Copyright 2018, *NEUSPEED*®. All rights reserved.
 Reproduction in whole or in part prohibited.
 DOC.65.10.81 Rev. 12.12.18